

THE LARGEST HIGHER ED SYSTEM IN THE STATE

Innovate. Collaborate. Inspire... Transform



Expand the talent pool for Wisconsin's employers

Increase investment in WTCS colleges by \$75 million over the biennium to sustain the colleges' high-impact, industry-aligned education and training. With additional resources, colleges can expand capacity to build upon proven strategies that successfully move students through the WTCS talent pipeline, expanding the skilled workforce in the state.



Make college more affordable

As student debt remains one of the most pressing issues for students and the nation's economy, state leaders can assist students and their families by investing \$3 million over the biennium in Open Educational Resources which will provide free-of-cost textbooks and other materials.

Reskill and upskill Wisconsin's current workforce

Workforce Advancement Training (WAT) grants deliver skill development opportunities to incumbent workers that are tailored to individual business needs. An additional \$3.5 million over the biennium will provide resources for WTCS colleges to meet growing demands and build a talented workforce with skills that are industry-aligned.

Sustain WTCS innovation

Over the last two decades, the System Office has led new innovations with reduced staff support and no significant new GPR investment. This has resulted in an overreliance on federal funding and created a structural deficit for both staffing and information technology infrastructure and security. An increase of \$875,000 GPR annually will enable WTCS to fill state-authorized positions, address essential data systems and security upgrades and continue to lead positive transformations for Wisconsin's world-class technical college system.

Transform financial aid to work for all students

Provide an investment of \$4.4 million annually to support the estimated increased financial need of WTCS students based on the Federal FAFSA Simplification Act of 2021.

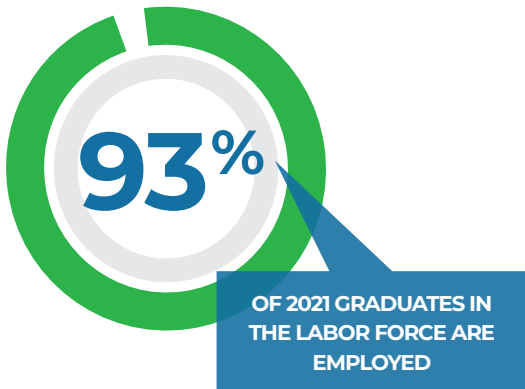
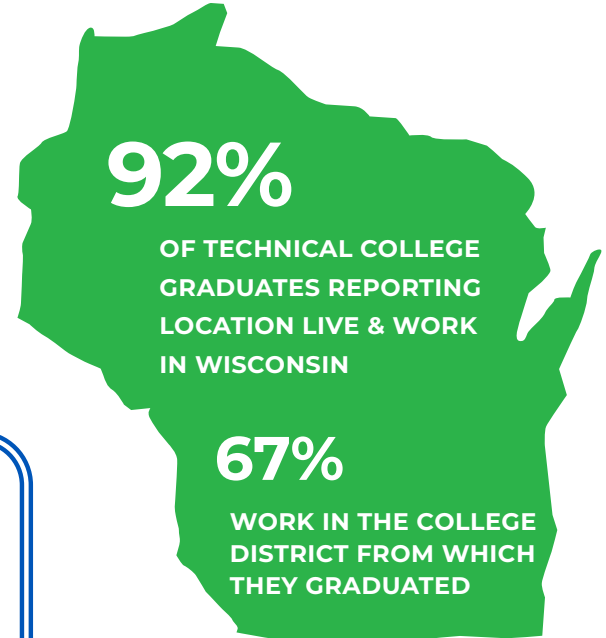
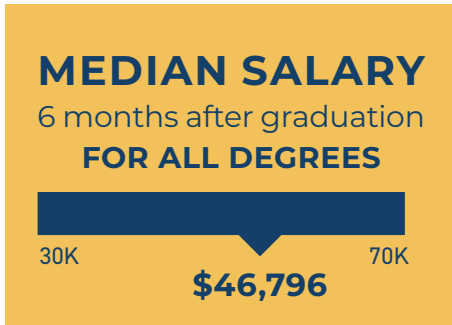
Modernize the Wisconsin Grants program to allow less than half-time students to be eligible for financial assistance. Align the statutory lifetime eligibility cap with the Federal Pell Grant ensuring non-traditional students have the support they need.





We were built for this moment.

Graduate Outcomes

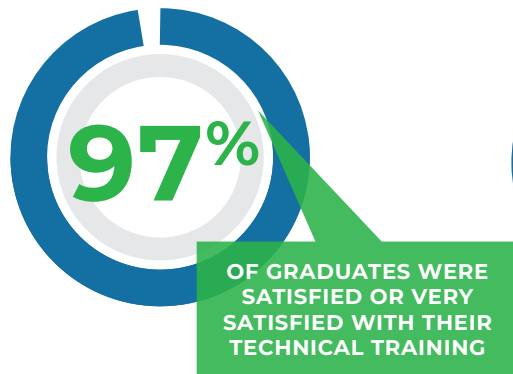


274,000+
**STUDENTS
SERVED**

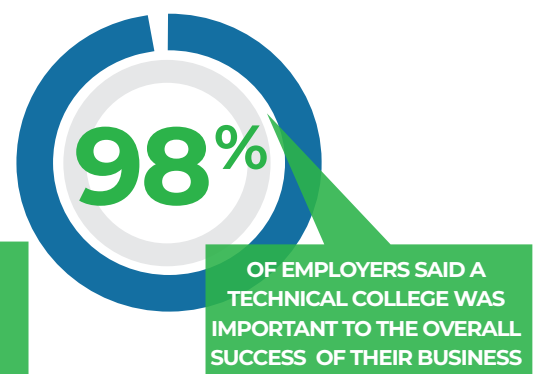
Apprenticeship



Student Satisfaction



Employer Satisfaction



Source: All data is sourced from WTCS reports, found on WTCSsystem.edu/publications